

ASI TeamWorks™

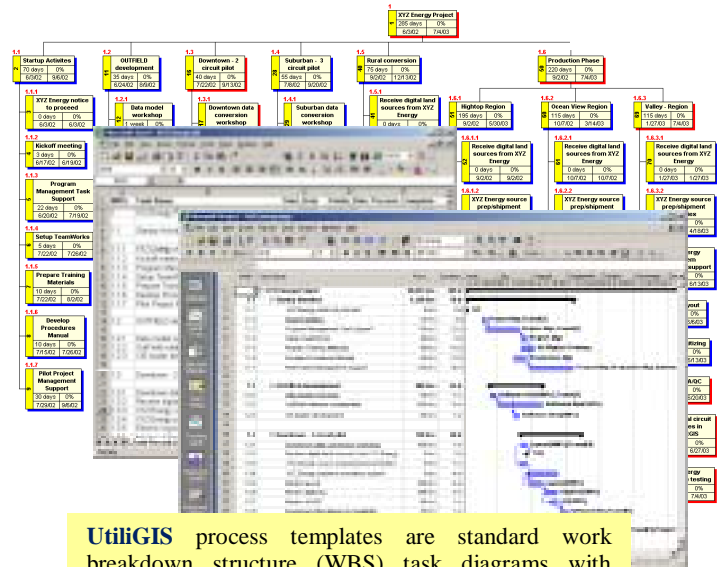
ASI is pleased to unveil its comprehensive project management system called **ASI TeamWorks™**. **TeamWorks** integrates several different process design, process control, status reporting, issue management, document management, and communication tools into one integrated application suite that is utilized by ASI project managers to deliver consistently high-quality results for our projects.

All of **TeamWorks** project tools share a common SQLServer data model, are fully integrated with ASI's Intranet, and customer accessible via a secure extranet connection (clients.anlt.com). By design, **TeamWorks** components share a common administration database such that activation of any single application enables all of the others.



Process Design and Control

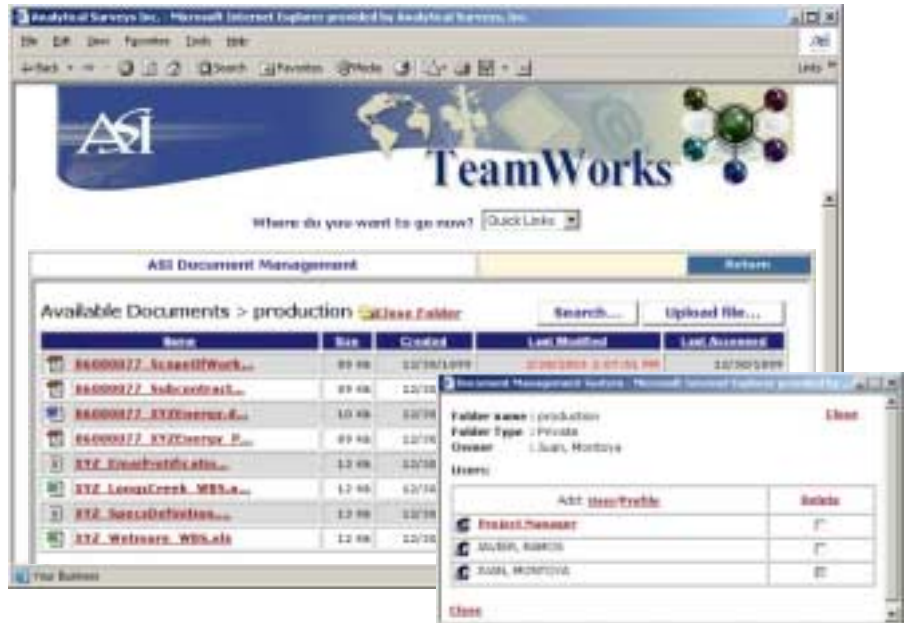
ASI has acknowledged that defining and executing repeatable data services business processes based on our project experience and staff expertise are critical project success factors. To capture and expand our knowledge base, ASI has initiated **UtiliGIS™**, a set of process tools that facilitate the design of the overall methodology of a project by applying standard process templates. The resulting individual steps are then customized based on project specifics. **UtiliGIS** also feeds into the performance management module of **TeamWorks**, thereby facilitating the control of each of the individual processes. The use of this module within **TeamWorks** starts during the proposal development phase of a project; so, if ASI is awarded a project, there is a systematic continuity built in between the proposal and project startup.



UtiliGIS process templates are standard work breakdown structure (WBS) task diagrams with duration, costs, and resources assignments associated. These diagrams integrate into Microsoft Project, Excel, and the **TeamWorks** SQLServer database via XML standards.

Document Management

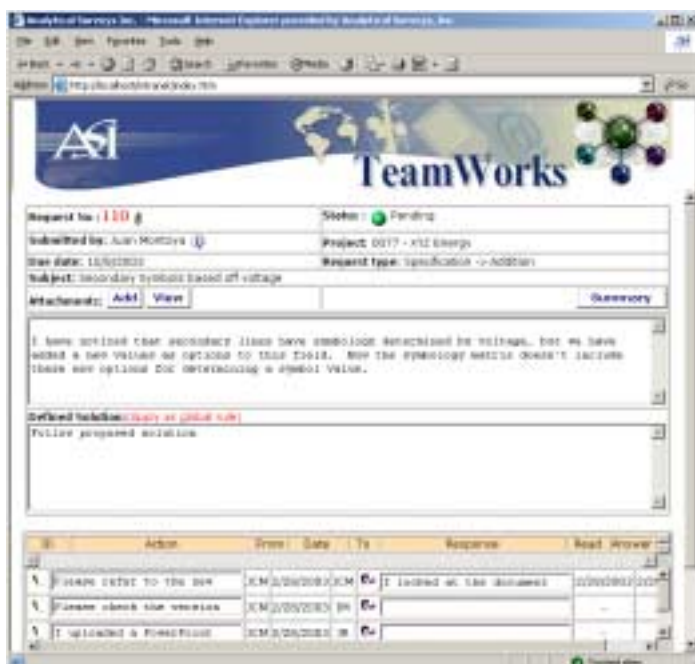
On large and technically complex projects, it is extremely important to provide easy access to project documentation for all personnel involved and to control the versioning of the documentation to ensure that only the most current versions are accessible for reference. The documentation management module of **TeamWorks** accomplishes these objectives. All relevant documentation for an ASI project, including the specification, procedures manual, meeting notes, monthly project status reports, and key emails are stored online. The document management subsystem also provides indexing and “fast-find” functionality and allows for the standard types of file protections controlling access to specific information.



The **TeamWorks** document management system allows users to subscribe to documents and folders. Email alerts of any document updates will be sent to document subscribers.

Issue Management

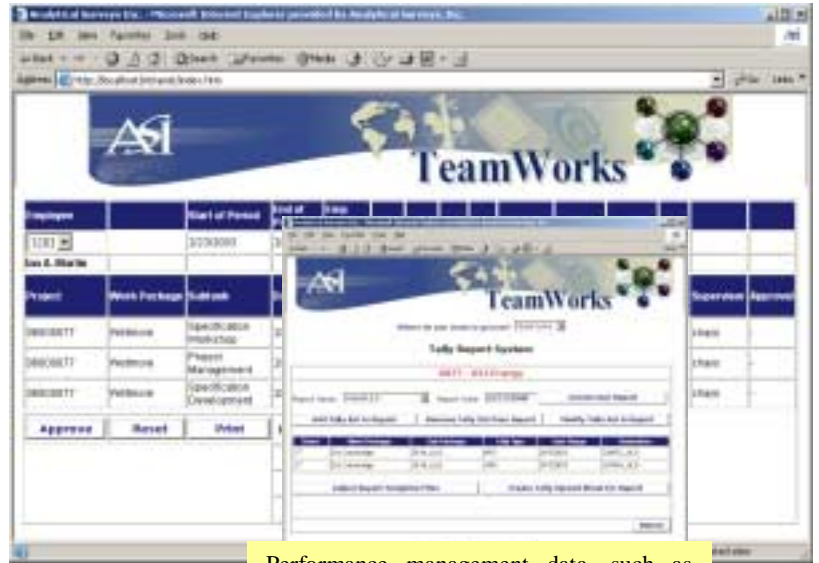
Specification and procedural questions are a large part of most GIS projects. Effective organization of and access to these questions and their answers can greatly increase a project’s efficiency and its output quality. The **TeamWorks** module that controls project issues is called **CIMA™** (Centralized Issue Management Application). In addition to simple problem resolution requests, **CIMA** handles many different types of project issues, such as support requests, action items, and subcontractor questions from one issues database.



These screens demonstrate the **CIMA** user interface. Note that the application allows multiple documents and multiple user responses to be associated with an issue.

Performance Management

Understanding and managing performance is obviously very important to ASI's financial success on a project, but it is equally important to ASI's clients. Without a comprehensive understanding of project throughputs and the detailed information necessary to manage them, it is difficult, if not impossible, to build an accurate project schedule. ASI project managers utilize **TeamWorks** gathered performance data from ASI's internal project accounting system and production tallies to assign and balance resources in concert with actual and planned productivity.

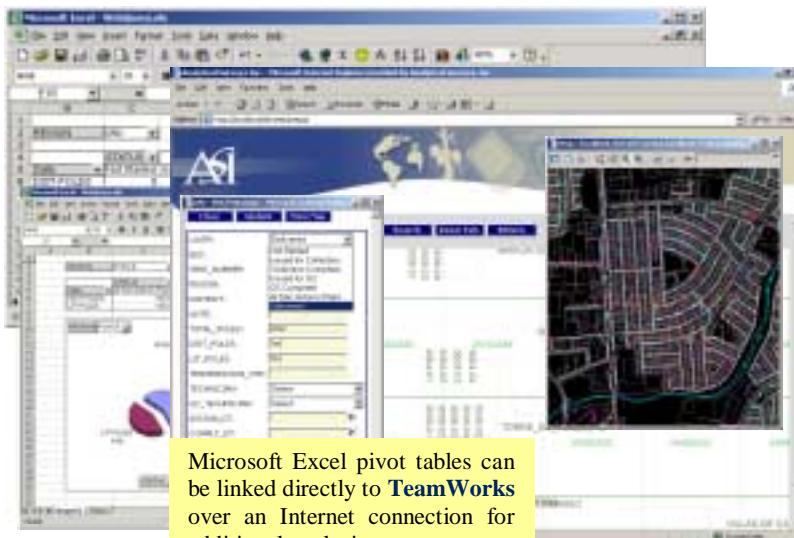


Performance management data, such as production tallies, time tracking, and project expense data, is automatically extracted during the production process and compared to the **UtiliGIS** project plan.

The **TeamWorks** performance management module reports progress based on actual completed units (i.e., production tallies) and by comparing actual hours vs. estimated hours developed through the **UtiliGIS** process design process. Since the **UtiliGIS** project plan is also the project schedule (each WBS task has a scheduled duration), the ASI project manager can monitor progress at a high-level by observing WBS task codes that are currently being charged to in ASI's accounting system (i.e., payroll, and subcontractor accounts payable).

Status Reporting

The **TeamWorks** system can generate many types of ad hoc status reports. Items like upcoming scheduled delivery dates, production units completed in a given time period, number of



Microsoft Excel pivot tables can be linked directly to **TeamWorks** over an Internet connection for additional analysis.

outstanding issues, and project cost data can be selected to become part of periodic project status reports. The flexibility of reporting provided by **TeamWorks** means that the client's project manager along with ASI's project manager can customize status reports to meet any specific reporting requirements.

In addition to predefined reports, **TeamWorks** information can be linked from the SQLServer database to Microsoft Excel pivot tables for additional adhoc reporting functionality and analysis.

TeamWorks status reporting module also includes a graphical project status tool that displays in-process worksets with standard Scalable Vector Graphics (SVG) web-browser technology. Addition of this technology enhances the **TeamWorks** application suite, allowing visual progress reporting as a byproduct of the ASI project management process.

For more information on how ASI can help you focus on project success, visit us at www.anlt.com.



TEXAS
11900 Crownpoint Drive, Suite 100
San Antonio, TX 78233
(210) 657-1500
(210) 657-1304 FAX

WISCONSIN
North Grand Avenue
Waukesha, WI 53186
(262) 574-9000
(262) 574-9090 FAX
