

# Product Overview / Service

## An advanced, cost-effective mobile solution for viewing GIS data



### What is ids™ ?

ids™ [Information Delivery Service] is viewing software that provides a simple-to-use, fast, controlled environment to view, query, redline, and print GIS data. The ids viewing software and GIS data are distributed on a DVD/CD-ROM or USB thumb drive in a highly-compressed and protected format that can consist of:

- Aerial imagery (digital orthophotography)
- Vector Data (line, point, text and polygon graphics)
- Raster Data (.TIF and .BMP detail graphics files)
- Attribute Data (Microsoft Access database)

ASI's Data Distribution Service ensures your end-users have access to current GIS data. Using ... *your data* ... and ... *our service* ... a schedule is established for ASI to publish and distributes updates of your GIS data in ids format.

### ids™ Utility Field Applications

ASI has worked closely with the utility industry to develop proven solutions to put mapping and facility management database information into the hands of utility field personnel, including field engineers and work crews. ids applications leverage GIS data to assist mobile workforce processes. All applications draw on the primary strengths of the ids Viewing Software and ASI's Data Distribution Service to provide speed of deployment, fast access to data at the point of work, ease-of-use and enhanced remote communication capabilities. Typical uses include:

**Basic Mapping** — Customer Service, Planning, Engineering, Crews, Contractors and One-call (Locate) Services all share the same map base

**In-Field Design** — redline sketch work requests in the field on top of map base and send back to the office via email

**Records Management** — field crews redline map corrections and facility updates to improve GIS database accuracy

**Outage Inventory** — speed up storm damage assessment and restoration activities using ids saved views, queries and magnify viewing

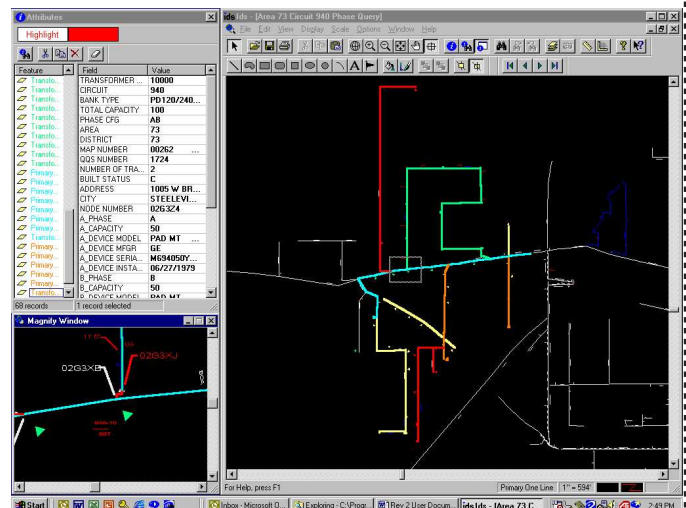
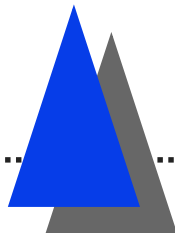
**Distribution Maintenance** — O&M Automation of field hardware inspections and maintenance tasks

**On Demand Plotting** — using any Windows compatible printer to generate custom, to-scale printed maps in seconds

### ids™ System Requirements

ids™ brings a wide variety of GIS vector and raster data sets in a highly-compressed format into a single system for read-only access. ids is designed for desktop and laptop PCs with the following minimum configuration:

- Intel-compatible Pentium personal computer
- Microsoft Windows NT 4.0, Windows 9x or Windows 2000/XP operating system
- 32 megabytes of physical RAM
- 10 megabytes of free hard disk space
- 4x CD-ROM drive
- 800 x 600 graphic resolution in high color (16 bit) color display is recommended for full-color and proper gray-scale display of maps, imagery, and details





## ids™ Local Government Applications

ASI's ids™ viewing software lets local governments leverage their GIS data assets to increase efficiency and productivity with a minimum of effort. ASI works with local governments to publish GIS data as ids CD-ROM products to distribute internally, to other governmental agencies and to the business community. Common uses of ids within local government organizations include:

### Real Estate

**Zoning Commission, Permits and Licensing** — locate property, view infrastructure; determine land use and zoning restrictions; field inspection remote communication; generate mailing list.

**Field Assessor and Building Inspector** -- locate and view property, verify permitting, redlining and property improvement reporting via remote communication, update GIS

**Economic Development** -- identify development sites, determine impact on public services, storm, sanitary infrastructure; compare land use and values, tax rates, boundaries.

### Public Works

**Public Utilities** -- locate and view facilities; create work orders; remote communication; generate mailing list for notification purposes.

**Street Maintenance** -- locate areas, view infrastructure; perform construction estimates; determine rights-of-way; determine detours; remote communication with utilities.

**Surveying & Engineering Department** -- determine property details prior to dispatch; locate monuments, USGS control points, section corners; remote communication and redlining.

**Public Transportation** -- determine routes, pick-up point for school bus, handicap and public transportation systems, turn-around space.

**Field Crews** -- Comprehensive viewing of field data; remote communication and redlining.

### Public Safety

an All-hazards tool that provides first responders with a common geographic reference for:

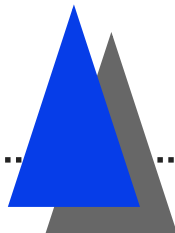
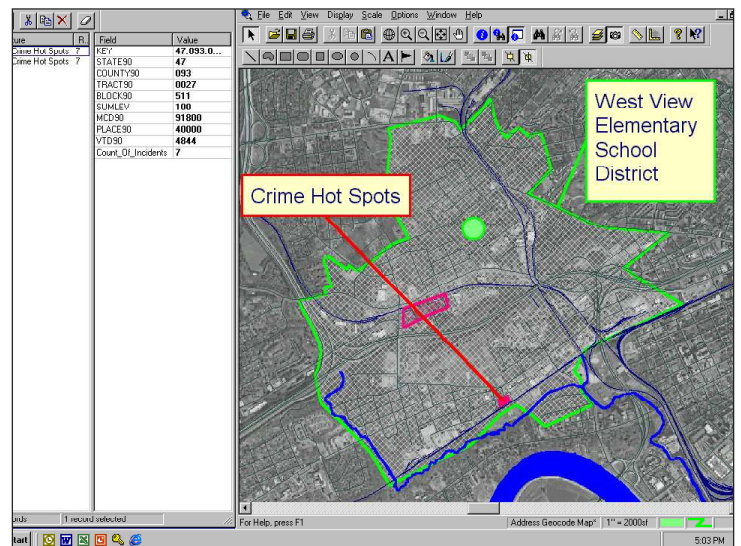
**Fire & EMS Services** -- determine fire location, routes, access, infrastructure, measure hydrant distances, view structure size, determine hazardous materials, traffic control, fire reporting.

**Police Departments** -- locate crime scene, tracking and reporting; substation placement; generate mailing list for offender notification.

**Disaster Planning, Mitigation, Management, and Recovery** - help identify disaster and restricted areas, locate evacuation routes and shelters, plan and redline first responder and resource deployment locations, and communicate this information electronically or through on-demand printed maps with all involved local, state, federal, and private organizations.

## Sales and Distribution of ids™ CD-ROM Map Products to the Business Community

There is a strong demand by the business community for GIS information from local government. An ids product helps significantly reduce the workload on agency staff to meet this demand by offering your GIS data to the public sector as a value-added ready to use product.



ids GIS Data Distribution  
Information delivery service™  
a Service of RAMTeCH Software Solutions Inc.

URL: [www.anlt.com](http://www.anlt.com)